



**THE JEWEL OF THE WEST**

**PERTH**

**PHOTOGRAPHY by ROGER WAITE**



# **THE JEWEL OF THE WEST**

# **PERTH**



**PHOTOGRAPHY by ROGER WAITE**







# Perth

Perth is the capital of Western Australia in the state's south west. It was founded in 1829 by Captain James Stirling as a British colonial settlement and has grown to become the fourth largest city in Australia with a population of 1.9 million (2012).

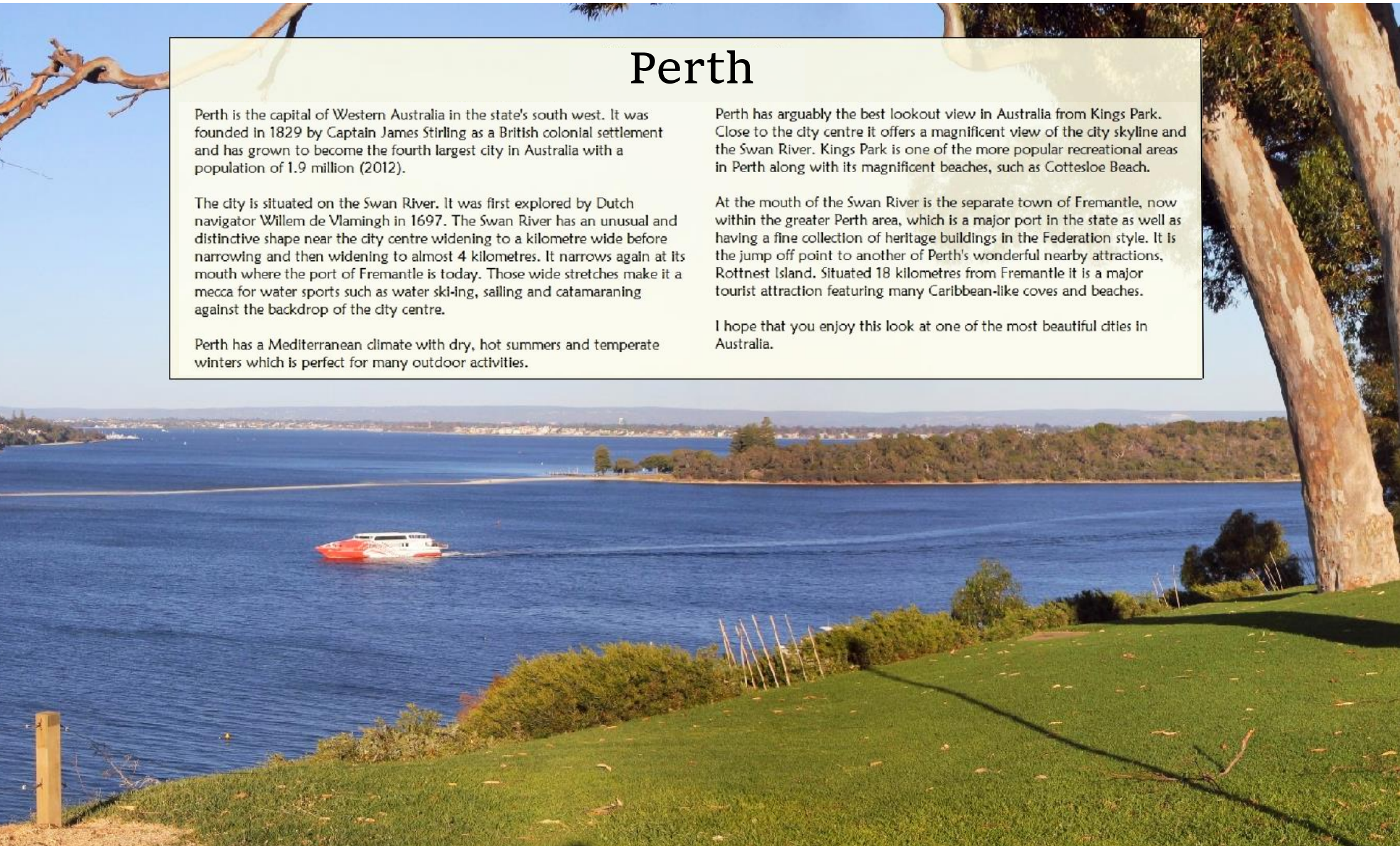
The city is situated on the Swan River. It was first explored by Dutch navigator Willem de Vlamingh in 1697. The Swan River has an unusual and distinctive shape near the city centre widening to a kilometre wide before narrowing and then widening to almost 4 kilometres. It narrows again at its mouth where the port of Fremantle is today. Those wide stretches make it a mecca for water sports such as water skiing, sailing and catamaraning against the backdrop of the city centre.

Perth has a Mediterranean climate with dry, hot summers and temperate winters which is perfect for many outdoor activities.

Perth has arguably the best lookout view in Australia from Kings Park. Close to the city centre it offers a magnificent view of the city skyline and the Swan River. Kings Park is one of the more popular recreational areas in Perth along with its magnificent beaches, such as Cottesloe Beach.

At the mouth of the Swan River is the separate town of Fremantle, now within the greater Perth area, which is a major port in the state as well as having a fine collection of heritage buildings in the Federation style. It is the jump off point to another of Perth's wonderful nearby attractions, Rottnest Island. Situated 18 kilometres from Fremantle it is a major tourist attraction featuring many Caribbean-like coves and beaches.

I hope that you enjoy this look at one of the most beautiful cities in Australia.







The city of Perth and Swan River viewed from King's Park.







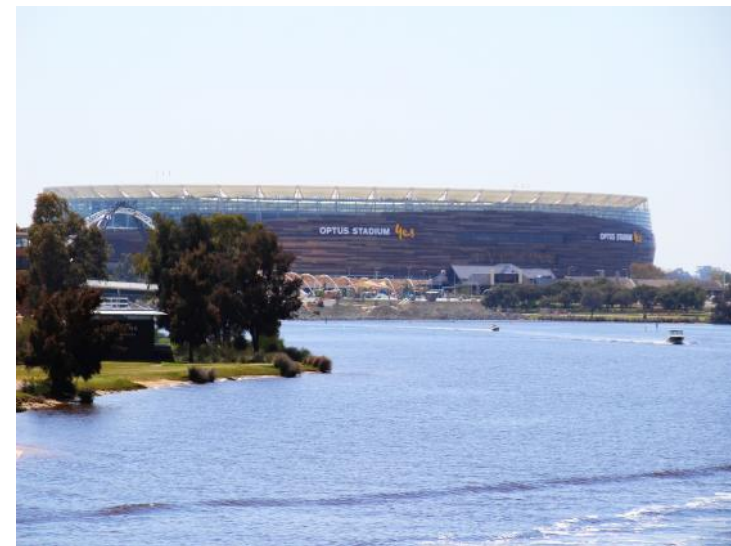


Aerial view of the city from above Kings Park.





**Above Left:** Perth ferry terminal.



**Above Right:** Optus Stadium **Below:** East Perth







Three of Perth's tallest skyscrapers of which two bear the names of mining companies that play a big part of WA's economy.





The view of the City from the new Quay development near Perth ferry terminal.





London Court, a Tudor style lane in the city.





London Court and the park near Perth Council House.





Kangaroo statues near Perth Council House.



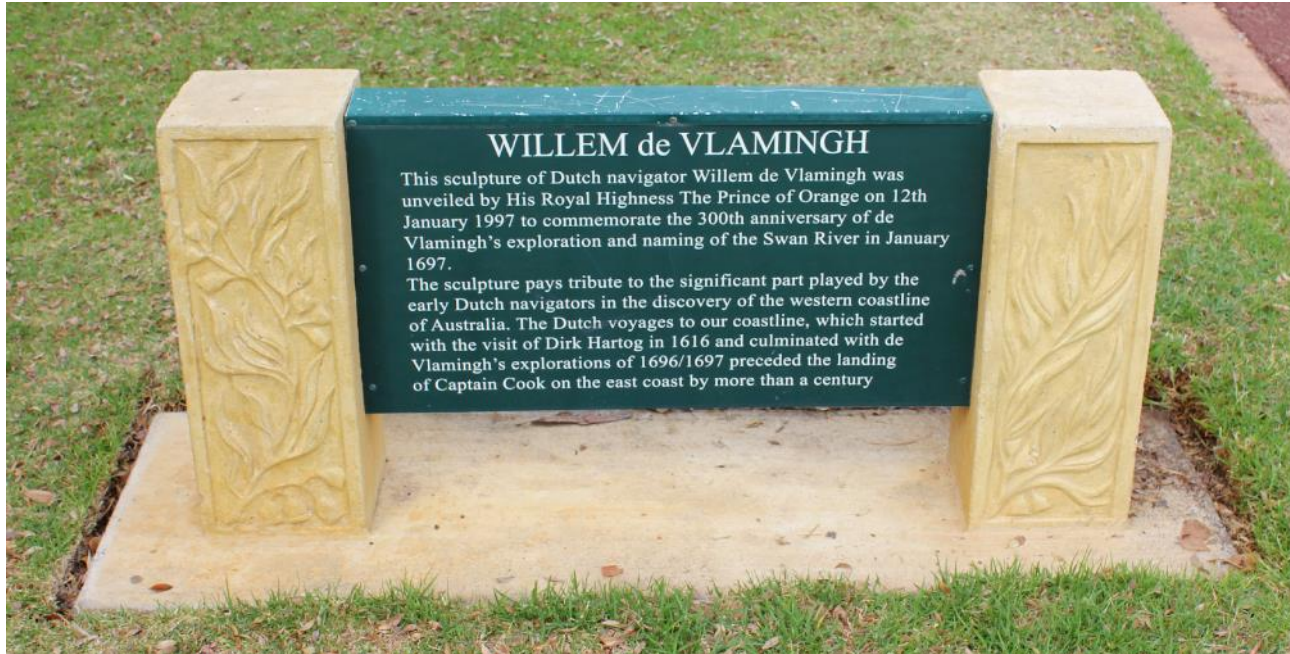


**Above:** Scenes along Hay Street Mall.



**Above:** Swan Bells tower in Barrack Square.





The story of Perth's history is told through some of the monuments around the city.

The Swan River was first explored and named by the Dutch navigator, Willem de Vlamingh in January 1697, nearly a century before Captain Cook sailed up Australia's east coast.

The Dutch took no interest in settling the area and, following rumours of French interest, the British created a settlement in 1829 where the CBD is today.

The greatest boost to the colony's population occurred after gold was found in the state celebrated in a fine sculpture at the entrance to the Perth mint.











The magnificent skyline of Perth at night from Kings Park as the moon rises over it in the east.













**Above:** Fireworks over the city. **Opposite page:** The War Memorial in Kings Park as the moon rises illuminating the constellation Scorpio. **Left:** The Southern Cross and pointers over the War Memorial. **Below:** The everlasting flame.







The city skyline through the grey gums of Kings Park at night.





Perth's Council House building offers a spectacular multi-coloured light display each evening along St George's Terrace.



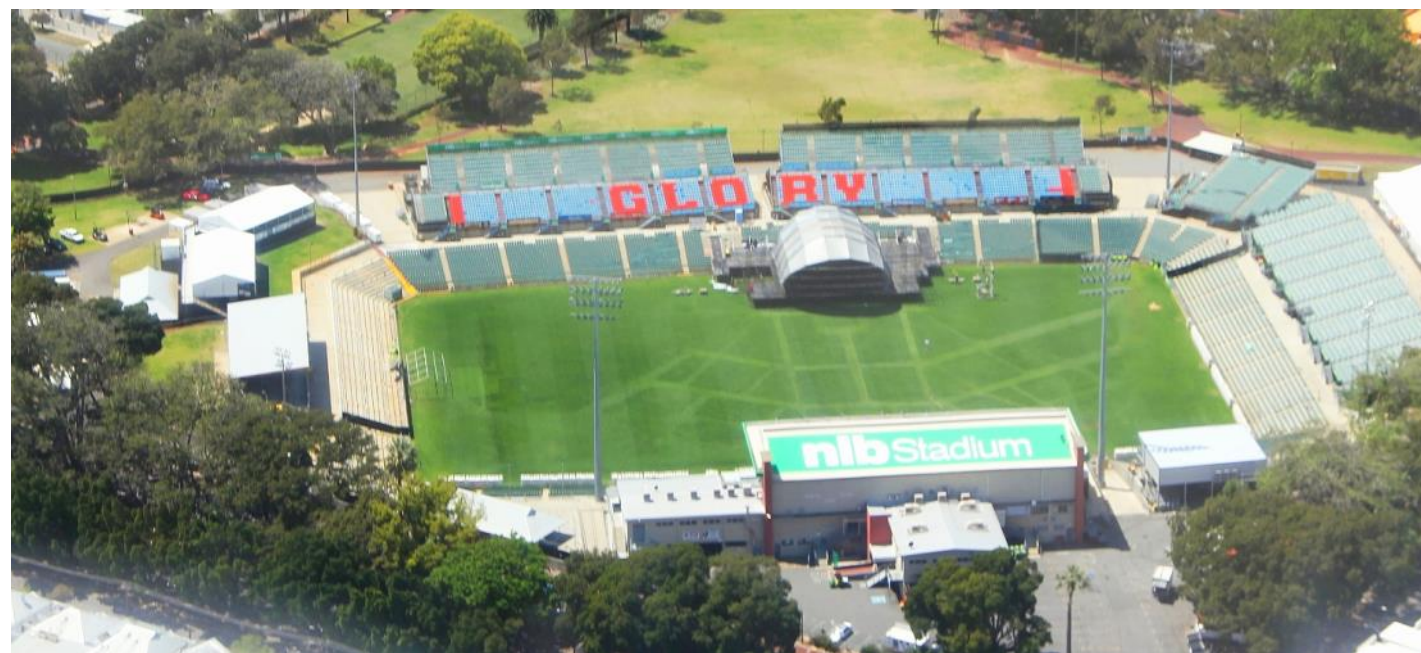


The WACA cricket ground, home of the Western Warriors cricket team with Gloucester Park trotting track in the foreground.





Subiaco Oval, the major Australian Rules football ground before Optus Stadium.



NIB Stadium, home of Perth Glory soccer team.





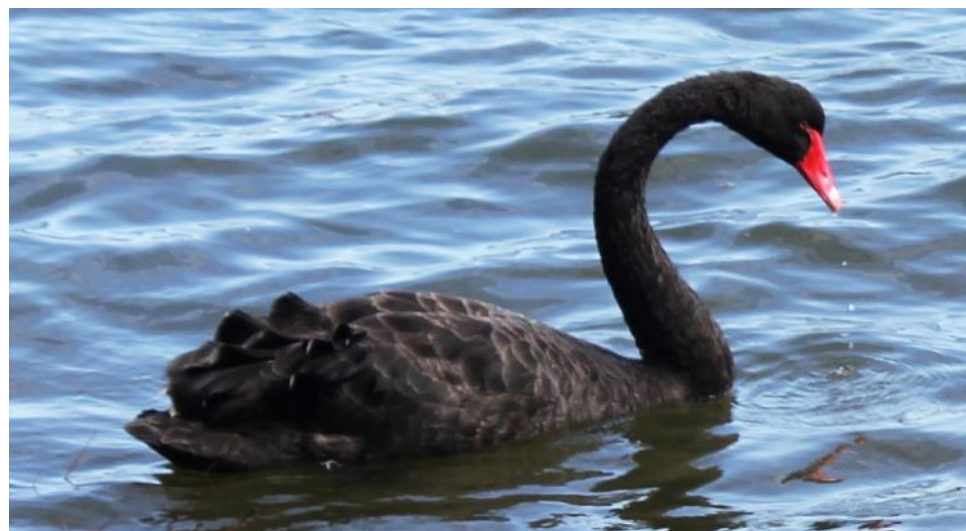
The view of South Perth and the Swan River and Canning River in the background from above the skyscrapers in the city centre.





**Above:** The Burswood Casino on the Swan River east of the city centre.

**Right:** A black swan gliding along on the Swan River.







Landscaped gardens along the Mitchell Freeway at the base of Kings Park.









The magnificent avenue of ghost gums that greets visitors entering Kings Park.





The Australian War Memorial at Kings Park.





Kings Park Restaurant and some of the beautiful wildflowers of Western Australia.



Some of the beautiful wildflowers at Kings Park..





Some of the beautiful flowers at Kings Park.



The view back to the city along the southern escarpment of Kings Park.





City view from Kings Park









South Perth and Kwinana Freeway from Kings Park









Perth Zoo is situated in South Perth and contains a wonderful collection of animals from around the world. Its collection of African animals is very impressive.

**Right** is a meerkat.

**Left and below** is an unusual tree kangaroo that is native to far north Queensland and New Guinea.

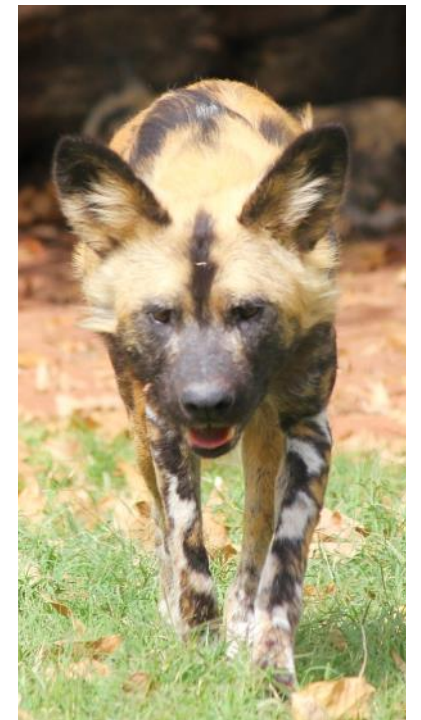
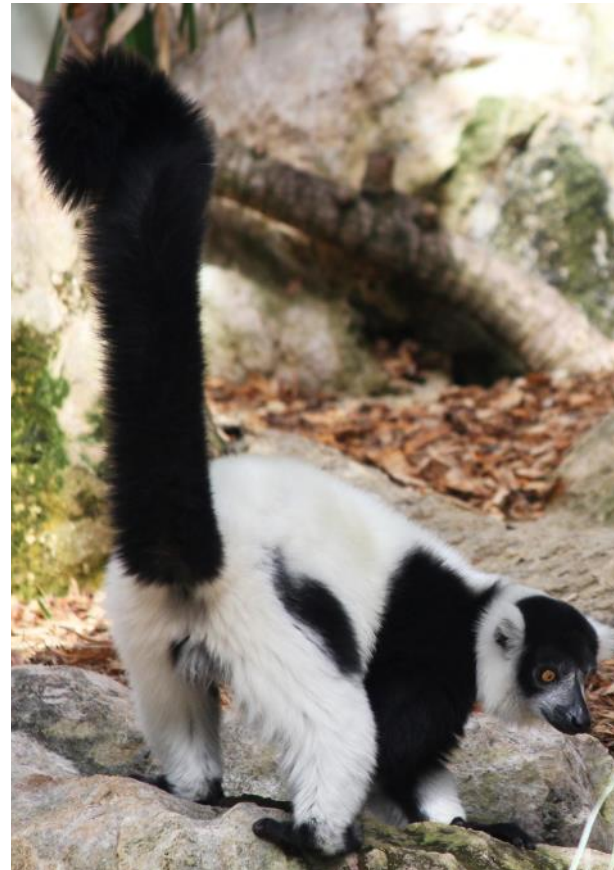






**From top left  
clockwise:**

Giraffe, Zebras,  
Marmoset, Hyena,  
Lemur and a Lion.







The Swan River at Midlands









View towards Kings Park from South Perth





Aerial view of the Swan River at Applecross.



Aerial view of the Canning River.





Aerial view looking over Mosman Park, one of Perth's more wealthier suburbs.





View from Point Walter Golf Course towards Mosman Park.





View towards East Fremantle and Fremantle from Mosman Park.









The Royal Freshwater Bay Yacht Club on Keanes Point in Peppermint Grove.









View back to the city centre from Mosman Park with the Point Walter sandbar in the foreground.









A father helps his son balance on a paddle board near Keanes Point in Peppermint Grove.





People enjoying life on the Point Walter sandbar .





View back to the city centre from Mosman Park with the Point Walter sandbar in the foreground.



Boats moored up along the cliffs of Point Walter Reserve.





Sailing on another perfect day on the Swan River.





The Royal Freshwater Bay Yacht Club on Keanes Point in Peppermint Grove.



Looking towards Dalkeith on the north shore of the Swan River.





Aerial view of the Swan River towards Fremantle from East Fremantle.





Aerial view of Fremantle and the port of Fremantle. C. Y. O'Connor in 1897 had the limestone bar and sand shoals across the entrance to the





Swan River removed and had breakwaters constructed and the river dredged to become a deep sea port.





Aerial view over the city of Fremantle.





The Port of Fremantle.





Surfers catch a wave on Port Beach with the port cranes of North Fremantle in the distance.





Surfers enjoy another golden sunset over the Indian Ocean off Cottesloe Beach.





An old Swan Lager ad on a Fremantle pub.



The Old Round House, WA's first building that was a goal between 1831 and 1857.



The Shoalwater Islands off Rockingham.





A rainbow made of shipping containers in Fremantle.





The Shoalwater Islands off Rockingham.









Kitesurfers and windsurfers in action near Rockingham.



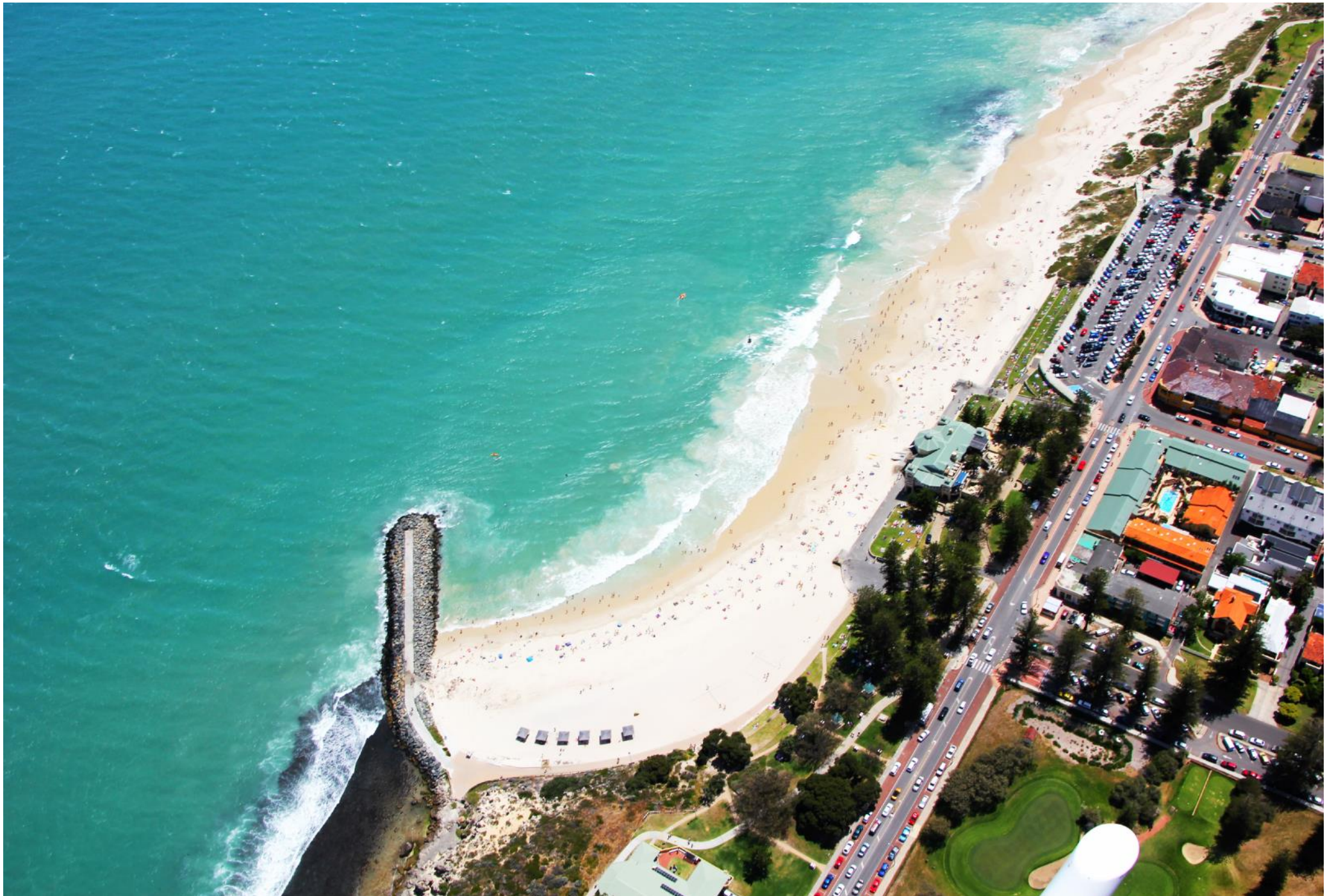






Aerial view of the northern beaches of Perth.





Looking directly down over Cottesloe Beach from the air.





Swimmers enjoy the blue waters at Cottesloe Beach.









A row of Norfolk Pines at Cottesloe.





The view towards the ocean from a sporting field at Cottesloe.





A golden sunset over Cottesloe Beach.









Hillary's Boat Harbour along the northern coast of Perth.









The Breakwater restaurant at Hillary's Boat Harbour.





Kitesurfers off Scarborough Beach.





Scarborough Beach









The magnificent view of Rottnest Island looking back towards Perth.



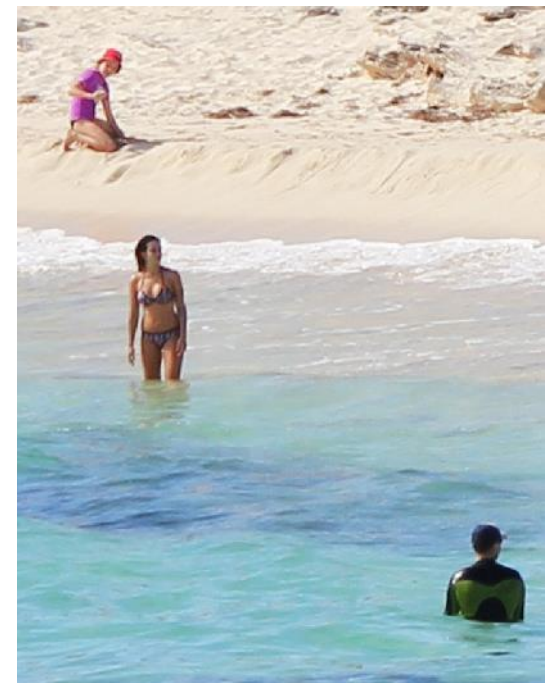






One of the Caribbean-like coves along the north shore of Rottnest Island.





**Left and bottom right:** Young people soak up the sun and sea on Rottneet Island. **Top right:** A child with a local quokka.





Sailing and motor boats line the Caribbean-like coves along the north shore of Rottneest Island.





The magnificent turquoise colours of the waters surrounding Rottneet Island.



Cycling is the main way of travelling around Rottneet Island.





The view to the City from Matilda Bay Yacht Club.



